



COMMUNITY NEWS

a **CURIOUS SEED** production
originally created by Christine Devaney and
Luisandro Kees (Performing Group, DE)

Chalk About

All ages 8 and up

UK TOUR
MAY / JUNE 2018

Photography by Lisa Lane/Three Drops by Wuth Staff

'a 5-star show, see it if you can!'
Primary Times

Some of the most brilliantly imaginative, humorous, touching theatre I have seen this year.'
The Times

Transforming the stage into a giant chalkboard for this exciting family-friendly show - a playful, funny and sometimes moving look at how we see ourselves and others, featuring dance, chalk, chat and one perfect scene containing everything you could wish for...

Saturday 26th May 3pm (2:15 for facepainting/refreshments)
Devoran Village Hall
Tickets: £8 / £6 child / £22 family
Available from 01726 879500 | www.carntocove.co.uk

Carn to Cove

Logos for sponsors and partners: CATALYST, Imagine, PTE, PRODU, RURAL ARTS, WITHAM, and others.

Whilst we are happy to promote events in our local community, Devoran School does not in any way endorse or take responsibility for any of these events.

TAODS Youth Theatre
are proud to support

"Benji Matthews"

In Concert



On
FRIDAY 20th
APRIL 2018
and
FRIDAY 27TH
APRIL 2018



7.30PM AT REDANNICK THEATRE,
TRURO, TR1 2JP

Tickets - £7 each
Available from:-
www.crbo.co.uk/benji
Or Tel: 01726 879500
All proceeds to
TAODS Youth Theatre



Whilst we are happy to promote events in our local community, Devoran School does not in any way endorse or take responsibility for any of these events.



National Trust

Merlin MS Centre
UK Charity Reg No: 1093691

Family Fun Run at Trelissick

Sunday 8th July 2018, 1.5k or 3k run

Registration from 8.30am, run starts at 10am
Entry includes a medal and goody bag

For details email lucy@merlinmscentre.org.uk or
tamsin@merlinmscentre.org.uk
call 01726 885530 or visit www.merlinmscentre.org.uk

To book visit www.crbo.co.uk/merlin, call 01726 879500
or drop into the Tourist Information Centre
at Truro or St Austell

Merlin MS Centre, Bradbury House, Hewas Water, St Austell PL26 7JF
www.merlinmscentre.org.uk

With thanks to:

Chris Nicholls motors **Biffa**

Whilst we are happy to promote events in our local community, Devoran School does not in any way endorse or take responsibility for any of these events.

Tregothnan

The UK's Largest Charity Garden Opening

21st and 22nd April 2018

This historic botanical garden, famous across the world for pioneering British tea, is open for one weekend each year. This year proceeds from the event will benefit the Merlin MS Centre.

Open 10am-5pm | Tickets £10 | 16s and under go free



Whilst we are happy to promote events in our local community, Devoran School does not in any way endorse or take responsibility for any of these events.

Workshop

MEDIUM: WATERCOLOUR



ALL ABILITIES VERY WELCOME

DRAWING, COMPOSITION AND TECHNIQUES
WITH SUE LEWINGTON

MONDAY 21ST MAY
10AM - 4PM
£50



The workshop will commence with a talk and a demonstration. Sue will then guide you through different techniques, showing you how to incorporate drawing whilst giving tips on planning your composition. You will leave the workshop with an insight into watercolour painting some finished sketchbook pages or a finished painting.

Whilst we are happy to promote events in our local community, Devoran School does not in any way endorse or take responsibility for any of these events.

Workshop

MEDIUM: PEN, PENCIL & WATERCOLOUR



ALL ABILITIES VERY WELCOME

URBAN SKETCHING & JOURNALING WITH MELANIE CHADWICK

MONDAY 14TH MAY
10AM - 4PM
£50



Weather permitting; this is a hands on workshop where you will be hitting the streets of Truro to draw outside on location. Melanie will go through the basics of urban sketching, creative ways to journal and how to build up a habit of drawing regularly.

Whilst we are happy to promote events in our local community, Devoran School does not in any way endorse or take responsibility for any of these events.



CARNON DOWNS
Community Association

**Royal Wedding
Afternoon Tea Party
Saturday 19th May 2018**

2.30pm to 5.30pm - Park an Gwarry Playing Field

Cream teas and refreshments in aid of Help for Heroes

Music from Helston Town Concert Band
Facepainting and balloon modelling
Bring a picnic, rug and chair!
(If wet weather will be held in the Methodist Hall)

Free entry - everyone welcome!

For more information visit www.carnondownsvillage.co.uk or
 Carnon Downs Community Association



Whilst we are happy to promote events in our local community, Devoran School does not in any way endorse or take responsibility for any of these events.



Community Association

ROYAL WEDDING EVENING PARTY



Saturday 19th May

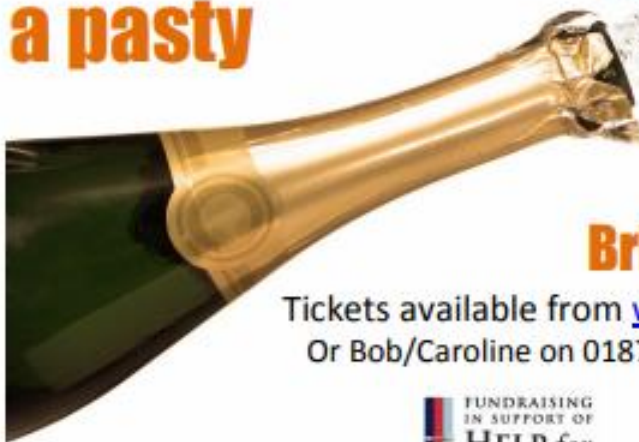
8pm to 10.30pm

Carnon Downs Village Hall

Live music from local covers band

"The Conspirators"

**£5 a ticket including
a pasty**



Bring your own alcohol

Tickets available from www.carnondownsvillage.co.uk

Or Bob/Caroline on 01872 864567 or Joy on 01872 870144



THE
CONSPIRATORS

Whilst we are happy to promote events in our local community, Devoran School does not in any way endorse or take responsibility for any of these events.

Workshop

MEDIUM: PENCIL & WATERCOLOUR



ALL ABILITIES VERY WELCOME

SKETCHING BOATS AND HARBOURS WITH ROB NORRINGTON

TUESDAY 29TH MAY
10AM - 4PM
£50



This is a workshop of both studio practise and drawing 'eu plain air'.
Weather permitting, in the afternoon you will head down to Malpas
for two hours tutored sketching.



Grab your running shoes and join us for this years Fun Run in aid of the Merlin MS Centre.

Nestled in grounds by the River Fal, The National Trusts Trelissick Gardens will be opening its parkland for runners of all ages to take park in the Fourth Annual Merlin Fun Run.

Starting in front of Trelissick House, amongst acres of beautiful parkland, runners weave around ancient oaks with epic views of the Fal Estuary. The fun run is mainly aimed at families but is open to anyone who wishes to give either the 1.5k or 3k run a go! Entry fees and sponsorship raised will go to the Merlin MS Centre.

The event takes place on July 8th and we'd love to see you, your students and their parents there. If you are able to include details of this event in your newsletter we would very much appreciate it.

To enter please visit www.crbo.co.uk/merlin. For information please email lucy@merlinmscentre.org.uk or tamsin@merlinmscentre.org.uk or call 01726 885530.

Sponsorship Forms are available by contacting the Merlin MS Centre.



Tamsin & Lucy
Merlin MS Centre Fundraising Team
Bradbury House
Hewas Water
St Austell
PL26 7JF
www.merlinmscentre.org.uk
tamsin@merlinmscentre.org.uk
lucy@merlinmscentre.org.uk

Whilst we are happy to promote events in our local community, Devoran School does not in any way endorse or take responsibility for any of these events.